



Tel:+86 181 0493 5999 Fax:+86 024-52679059

E-mail:robbyhuo@jundawax.com

Add:Qiangujiazi Village, Tayu Town, Wanghua District, FushunCity,
Liaoning Province, China

Web:www.jundawax.com



FUSHUN JUNDA WAX INDUSTRY CO.,LTD



COMPANY BROCHURE

About Junda wax

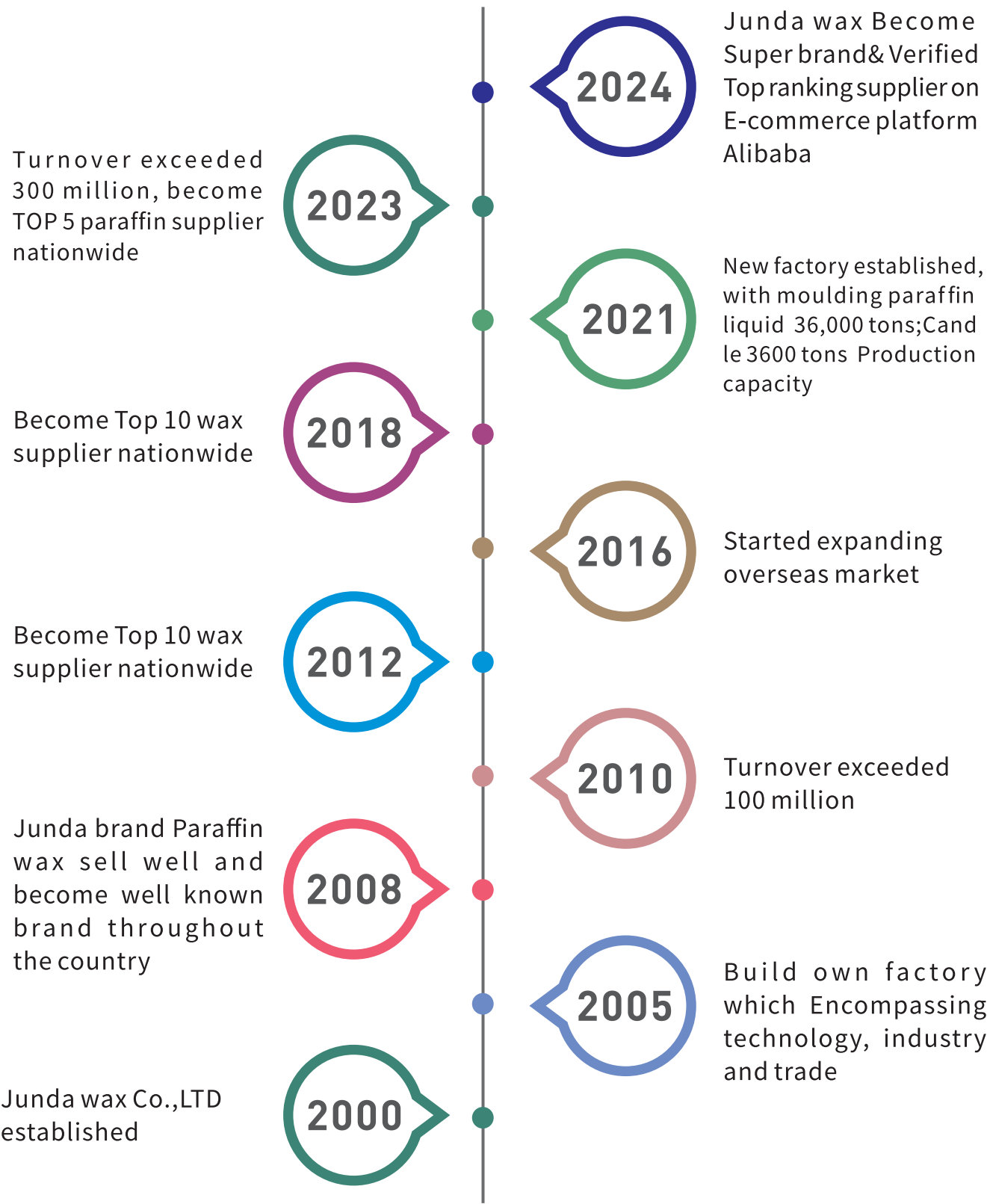
Junda wax located in Fushun Petrochemical Company, Fushun City, Liaoning Province, China. next to the "cradle" of China's oil refining industry. Founded in 2000, that time has allowed us to build a wealth of knowledge, experience and understanding of the wax market. As raw material supplier ,Junda have stable supply chain which can ensure the long term and excessive supply, Junda focus on exquisitely unique range of quality paraffin wax, candles and other related products.

After serve in this industry over 20 years, we understand the unique needs of our clients. With a focus on delivering customized solutions, we have built lasting partnerships with clients across the world. Our success is measured by the success of our clients, and we take pride in the value we bring to every project.

We delivered over 50,000 tons various of Paraffin Wax every year to our customers all over the world so far.Our major sales cover over 100 countries till now with thousands of customers.

JUNDA always offer great service and great pricing to every buyer.And that is how we have created a strong network globally and still expanding immensely,We look for long term partnerships with customers and suppliers where shared values and common goals align for mutual benefit.

Junda History

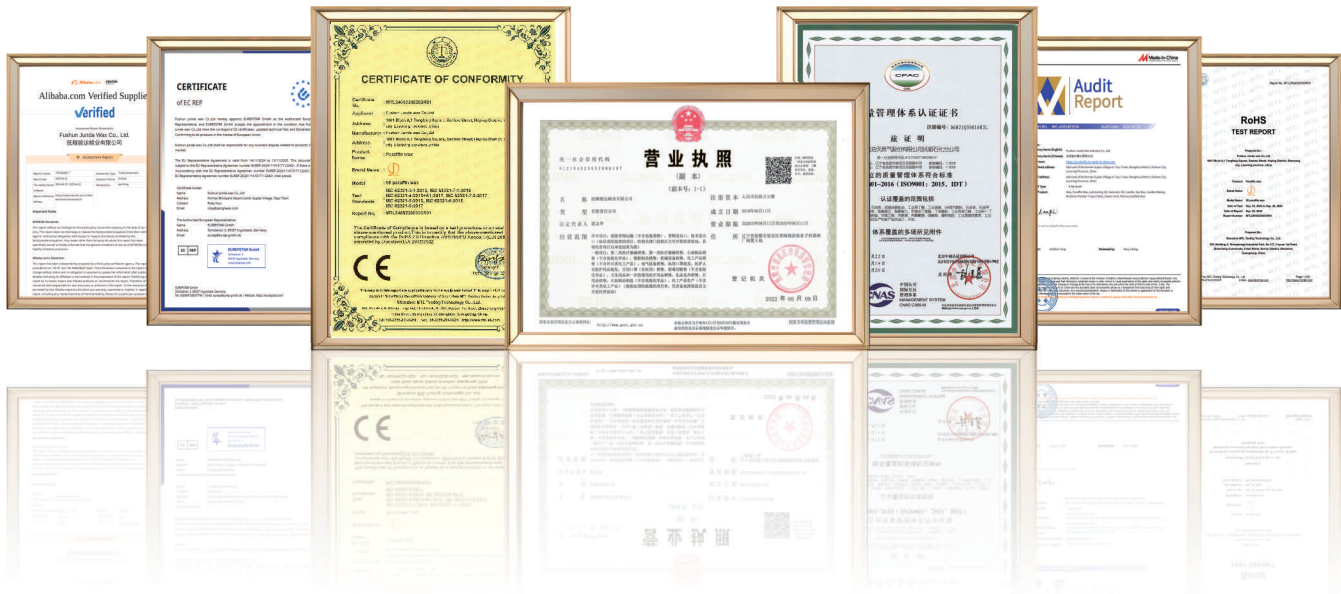


Our Main Market



North America: 25%	Europe: 20%	Asia: 15%	South America: 25%	Africa: 15%
Mexico America	poland Germany britain	India Cambodia Vietnam	Brazil Peru Columbia Venezuela Ecuador	Ethiopia Kenya South Africa

Qualification certificate



Our Products

Paraffin wax

Kunlun Fully/Semi/Raw Paraffin wax 52–64 (Daqing,Fushun)

KUNLUN Paraffin wax is the “platinum” in the derivatives of petroleum products. Fushun Petrochemical has always been the largest paraffin wax production and export base in China. The raw materials for every seven candles in the world are produced here.

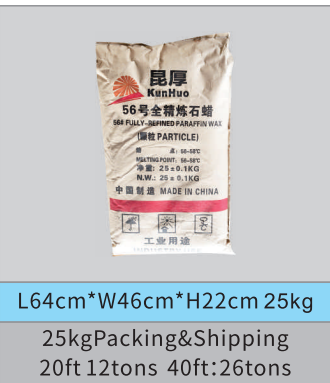
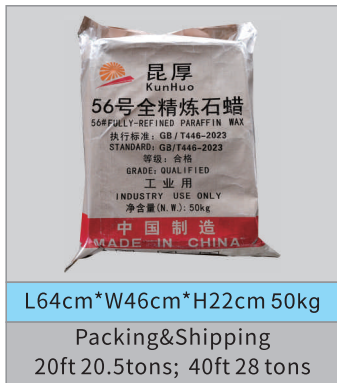
The quality of Fushun Petrochemical’s “KUNLUN” brand paraffin wax products has been continuously upgraded. Taking craft wax as an example, a piece of craft wax the size of a matchbox can burn for more than 4 hours, which is more than double the ordinary wax on the market. Slightly fragrant, popular in overseas markets.



Junda Self Production Fully/Semi/Raw Paraffin wax 52–64

JUNDA has its own paraffin wax production line. We will get raw materials from Petrochina and then process our own paraffin wax in our factory.

Our JUNDA brand paraffin has been sold to more than 20 countries including Europe, Central and South America and Africa. In addition to high quality, it can also provide more favorable prices. Fushun Junda puts the improvement of the technological content of paraffin wax products in an important position, and focuses on technological innovation and technological transformation to continuously optimize the paraffin wax production process. Up-grade and up-grade have formed superior technology and unique craftsmanship.



Fully refined Paraffin wax

Fully refined paraffin wax has a higher melting point and lower oil content than semi-refined paraffin wax. This makes it more stable and better suited for applications that require a higher melting point, such as candle-making, where it is used to improve burning performance and reduce dripping. It is also used in the cosmetic and

pharmaceutical industries;High-quality candle production;Food-grade wax for coating and preservation;Pharmaceuticals and so on.

Fully refined paraffin wax is utilized in a broad variety of industrial applications as a lubricant, waterproofing agent, and mold releasing agent.

Some examples of these uses include the processing of rubber, the coating of paper, and the finishing of textiles

Semi refined Paraffin wax

Semi-refined paraffin wax, on the other hand, has a lower melting point and higher oil content than fully refined paraffin wax. This makes it more pliable and easier to work with, making it suitable for applications that require a softer wax, such as in the production of wax paper, crayons, and some rubber products. It is also used in

industrial applications such as lubrication and as a component in waterproof coatings;Candle making (especially in lower-cost candles);Waterproofing and sealing materials

Raw Paraffin wax

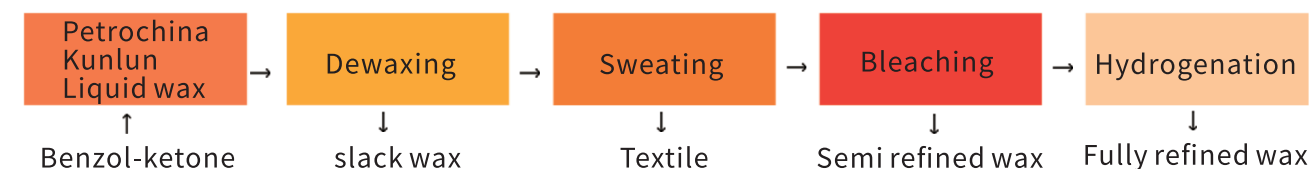
The oil content of coarse paraffin is relatively high, and the color of the product is darker. Due to the above reasons and some other reasons, it is relatively poor quality compared with fully refined paraffin with the same melting point. The arse paraffin with higher oil content has lower tensile strength and is soft and fragile. Have a good thermal stability, a certain toughness and contractility.

Test Item		Quality Index														Test Method
		50	52	54	56	58	60	62	64	66	68	70	70			
MELTING POINT/ ℃	min	50	52	54	56	58	60	62	64	66	68	70	70	GB/T 2539		
	max	52	54	56	58	60	62	64	66	68	70	72	72			
Oil Content/% ≤		0.8												GB/T 3554		
Color Saybolt ≥		+27						+25						GB/T 3555		
Light stability ≤		14						5						SH/T 0404		
Needle Penetration ≤		19						17						GB/T 4985		
Kinematic Viscosity		REPORT												GB/T 265		
Odor # ≤		1												SH/T 0414		
Water Soluble Acid And Alkali		null												NB/SH/T 0407		
Impurity and Water		null												Visual Inspection		

Application

TYPE OF INDUSTRY	APPLICATION	TYPE OF INDUSTRY	APPLICATION
candles	Fuel, drop Point regulations	Recycling	Compatibility sizing
Printing Inks	improvement of Rub Resistance, Slip	Ceramics and Metals	Binders for sintering
Paints and Coatings	Matting,surface protection	Paper and Cardboard	Surface Hardening
Building	Modification of Bitumen, Ant-Graffiti treatment	Polishes	Surface Protection of Leather, Floors, Cars
Explosives	Stabilization,Binding Agent	Timber industry	WaterProofing,providing Flexibility and Consistency
Matches, Pyrotechnics	Impregnations,Fuel	Rubber industry	Release Agents Enhancing Rigidity Surface Hardening
Electrical and Electronics	Release Agent,insulating Material and Etching Bases	Crayons and Wax Pastels	Vehicle for Pigments, Regulates Hardness
Adhesive and Hot mells	Viscosity Regulation Lubrication, Surface Hardening	Cosmetics	Binder and Consistency Regulation for Ointments, Pastor, Lipsticks,Creams
Packaging	Laminating,adhesive, Control flexibility, moisture barrier coating	Textile	Reinforce,Providing Water Proofing and Improving Tactile and Visual Aspect
Fire Logs	Binding Agent for Wood Particles, Helping Long Control Combustion	Plastics	lubrication (Poly Vinyl Chloride),Release Agents (poly Amide),Pigment Carriers (Master Batch)
Foods	Citrus fruits and cheese Coating, Chewing gum Base(control chewy texture), Confectionary	Medicine and Pharmaceutical	Molding & Release Agents in Dental Laboratories Retardants, Surface Hardening Of pills

Production Process



Microcrystalline wax



Microcrystalline waxes are characterized for being produced in oil refineries, from the deparaffination of heavy oils. Their particular branched

molecular structure gives them greater viscosity and elasticity with respect to macrocrystalline paraffins. Its range of melting points is equally higher. Compared to other forms of waxes like paraffin wax, microcrystalline wax has a greater melting point and is more elastic and sticky. It is often utilized in a wide range of industrial applications, including the creation of candles, cosmetics, polishes, and coatings.

Test Item	Quality Index	The Measured Quality	Test Method
Melting Point (°C)	Min77- <82	79.7	GB/T 8026-2014
Needle Penetration(35°C,100g) 1/10mm	REPORT	31	GB/T 4985-2021
Needle Penetration(25°C,100g) 1/10mm	Max 30	21	GB/T 4985-2021
Oil Content %	Max 3	1.25	SH/T 0638-1996
Color #		2.0	GB/T 6540-86 (Confirmed in 2004)
Kinematic Viscosity(100°C) mm²/s	Min10	17.51	GB/T 265-1988(2004)
Total N-Alkane Content of C60 and Below %	REPORT	27.16	Appendix A
Total Non Normal Alkane Content of C60 and Below %	REPORT	72.84	Appendix A
Water Soluble Acid And Alkali	null	null	NB/SH/T 0407-2013
Conclusion	Qualified		

Fischer-Tropsch wax

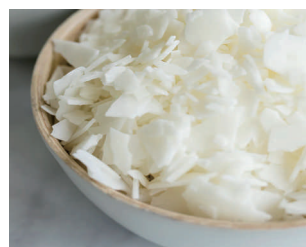


Fischer-Tropsch wax is a synthetic wax obtained from natural gas in high temperature reactors. Catalysts are commonly used for the synthesis, and synthesis

products can be controlled by specific conditions. The advantages of Fischer-Tropsch wax are: high melting point & high crystallinity, great firmness, excellent chemical and thermal stability, excellent compatibility with other waxes.

Test Item	Quality Index	The Measured Quality	Test Method
Melting Point (°C)	Actual measurement	69.7	DSC method
Oil Content %	Max 3	2.03	GB/T 3554
Color Saybolt #	Min+20	+29	GB/T 3555
Appearance	White flake solid	White flake solid	Visual Inspection
Needle Penetration 1/10mm	Max 20	14	GB/T 4985
Freezing point(°C)	61-66	63.4	DSC method
Conclusion	Qualified		

Soy wax



Soy wax is made by the full hydrogenation of soybean oil; chemically this gives a triglyceride, containing a high proportion of stearic acid. It is typically softer than paraffin wax and with a lower melting temperature, in most combinations. However, additives can raise this melting point to temperatures typical for paraffin-based candles. The melting point ranges from 49 to 82 degrees Celsius (130 to 150 degrees Fahrenheit), depending on the blend.

Stearic acid



Stearic acid is a long-chain fatty acid. It occurs in a variety of natural sources, including shea butter and coconut oil. Products containing stearic acid may be beneficial for the skin. Multiple studies have shown that products containing stearic acid may benefit a person's skin. Some natural sources that contain stearic acid, such as coconut oil and shea butter, have moisturizing and anti-inflammatory properties. However, people should avoid using stearic acid on its own. It may irritate a person's skin and cause other health problems. Moreover, people should be aware of their allergies and sensitivities to different skin care ingredients. Products containing stearic acid may not be suitable for everyone to use as part of their skin care routine.

Palm wax



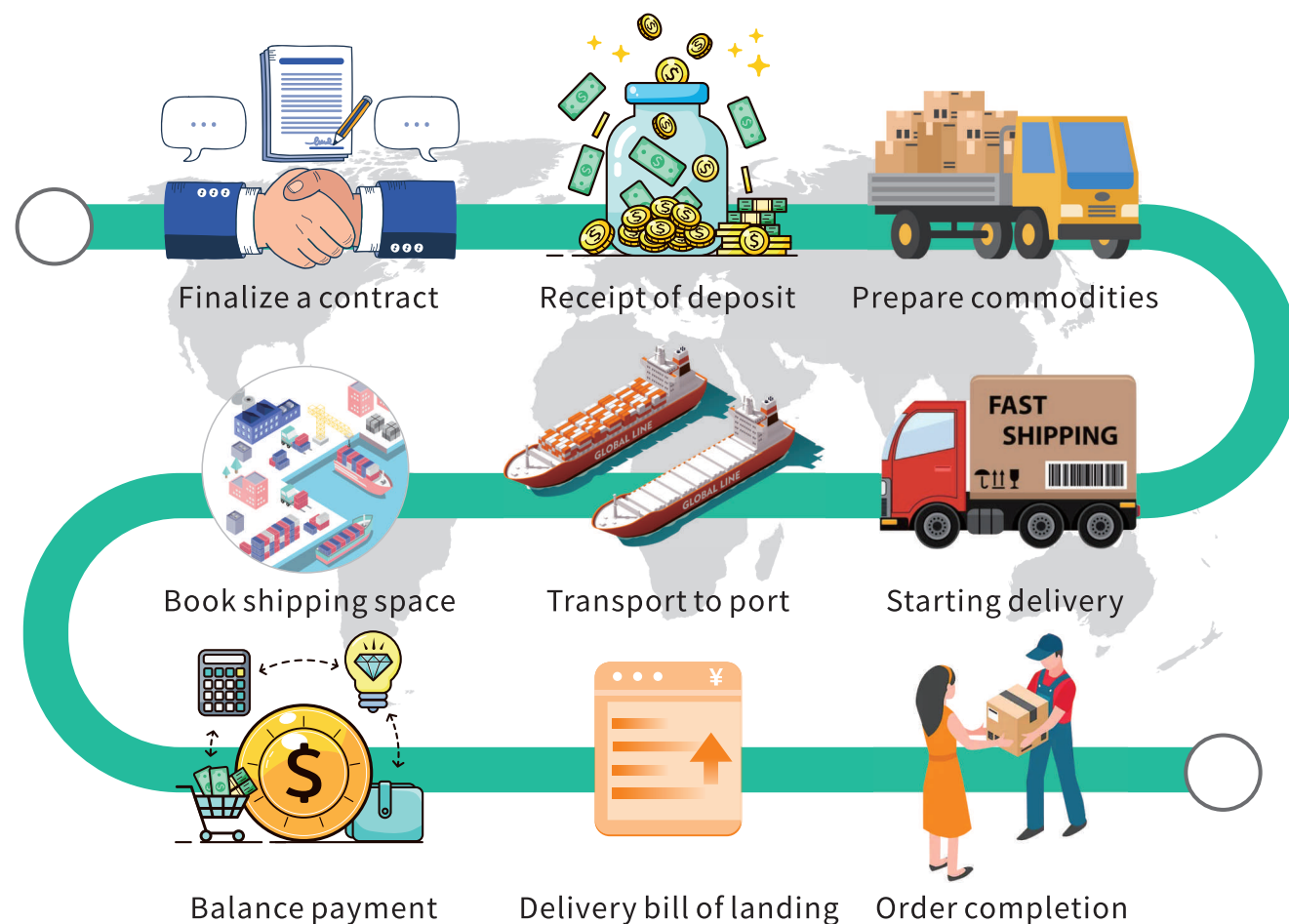
Palm wax is created by hydrogenation of palm oil and/or by separation of the oil into solid and liquid fractions. It is an excellent choice for outdoor and church light candles. Palm wax has many benefits for the small candle maker and large manufacturers alike, whom are focused using more economical, more natural, and more sustainable products for high-quality candle making than using petroleum-based products. It contains no ingredients with animal or mineral/petroleum origin.

Candle&Candle Making Machine



Our candle making machine support fully refined/semi-refined paraffin particles/wax powder wax/block raw materials, can make Pillar candle /Taper candle/Tealight candle which automatically complete the material supply, extrusion, repair, output a complete set of production process.

Transaction process



FAQ

1.Are you trading company or manufacture?

We are Paraffin wax & candles manufacture with 10,000m2 factory in Fushun,china.

1. What' s the Shipping specification? usually we provide 21 TONS in 20 foot container

3.What is your payment terms and conditions: We usually accept TT with 30% advance payment.

4.Classification of paraffin wax

According to the refinement, it can be divided into three types: fully refined paraffin wax, semi-refined paraffin wax and crude paraffin wax. The first difference is oil content. Fully refined paraffin wax <0.5%. Semi-refined paraffin <2%. Crude wax 2%.In addition to differences in oil content, they also have differences in color. The higher the oil content, the more yellow the color will be. But other aspects.

Fully refined paraffin wax is the most common materials for candle making.Semi refined Paraffin wax is not too much difference compare to Fully refined type .and it should be noted that Semi refined paraffin wax is particularly suitable which have the same police with Fully and Semi refined paraffin wax .

The oil content of coarse paraffin is relatively high, and the color of the product is darker. Due to the above reasons and some other reasons, it is relatively poor quality compared with fully refined paraffin with the same melting point. The arse paraffin with higher oil content has lower tensile strength and is soft and fragile. Have a good thermal stability, a certain toughness and contractility.

in fact, the current technology is very mature. The oil content of some semi-refined and coarse waxes can also be controlled in a very low range. So it can meet the different needs of different customers.

5.About the Melting point of paraffin wax.

Each type of paraffin wax is divided into different varieties according to the melting point, generally every 2°C, such as 52, 54,56, 58 and other grades. Junda able to provide 52-64° paraffin wax.

6.What is the HS code and CAS No. Of your product?

HS CODE:2712200000

CAS No.: 64742-51-4

7.About delivery schedule: Usually in 15 days after receipt of deposit.